



RM-7-HC

Glass Door Merchandiser with Swing Door



RM-7-HC
10/03/25
Item # 13408

W x D x H
21" x 25.25" x 39"



RM-7-HC



RM-7-HC-BLK



RM-7-HC-WHT



NSF / ANSI 7



2M75



One Section RM-7-HC/-BLK/-WHT

7 ft³

21" x 25.25"

44.88"

39"

2 adjustable, 1 floor shelf

17.75" x 20.75"

18" x 9.25"

180 lbs.

28" x 24.5" x 44"

One Section RM-7-HC/-BLK/-WHT

115/60/1

15.0 Amps

5-15P

104-126

60° to 86°F

32° to 39°F

3.2

1.38

582 (1/8HP)

R290

Dimensions / Capacity

Interior Storage Capacity (CF)

Overall Width x Depth

Depth with door open

Height

Adjustable Shelves

Shelf Dimensions (W x D)

Floor Shelf Dimensions (W x D)

Crated Shipping Weight

Crated Width x Depth x Height

Electrical / Refrigeration

Voltage

HACR Breaker

Electrical Connection (NEMA)

Voltage Range

Ambient Temp. Range

Control Setpoint Range

Amperage

Energy Consumption (kWh/day) @ASHRAE

Approx. Nominal Compres. BTU/HR (HP)

Refrigerant

Options

- ☐ Floor Epoxy Shelf (HS-5344)
- ☐ Epoxy Shelf (HS-5343)

Warranty

3 Year - parts and Labor on entire machine.
5 Year - Parts on Compressor
Valid in United States, Canada, Puerto Rico and U.S. Territories. Contact factory for warranty in other countries.

Item #: _____
Project: _____
Qty: _____
AIA#: _____

Features

- ▶ Curved vertical corners with silver/black/white aluminum exterior provide enhanced product display
- ▶ Energy efficient vertical LED interior lights illuminate products on display
- ▶ Forced-air evaporator for quick temperature pull-down

- Large glass door are energy efficient low E multi pane glass
- Spring assisted self-closing door with stay open feature
- (3) epoxy coated wire shelves are standard
- Stackable (three units high) to conserve warehouse floor space
- Refrigerant flow is controlled with a capillary tube
- 2 inch leveling legs standard
- Three years parts and labor warranty
- Five year compressor warranty
- 8 ft. cord and plug
- Exterior finish available in silver, white, and black

Capacity:
20 oz. bottles: 102
12 oz. bottles: 217

Container Qty: 144

If GFCI is required, a GFCI breaker MUST be used in lieu of GFCI receptacle

Hoshizaki reserves the right to change specifications without notice.

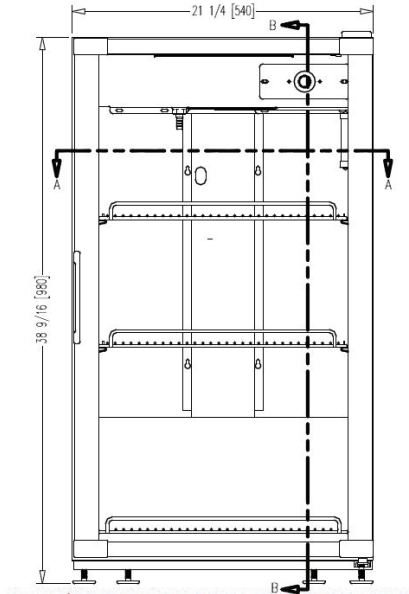


RM-7-HC

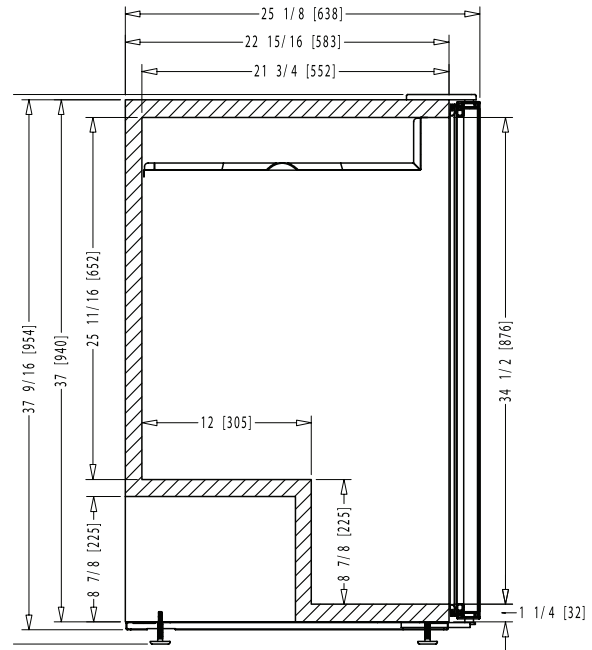
Glass Door Merchandiser with Swing Door

RM-7-HC
10/03/25
Item # 13408

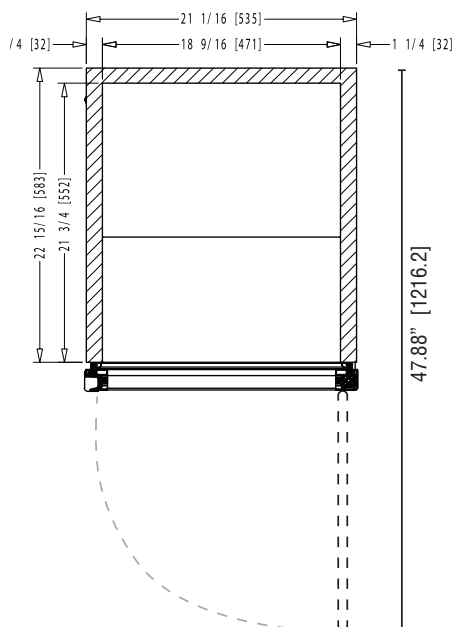
FRONT VIEW



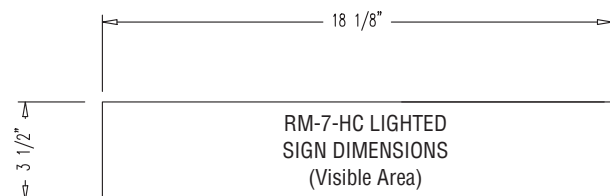
SIDE VIEW



PLAN VIEW



HEADER DIMS



Graphic Requirements:

- 360 dpi resolution. Scale 1=1
- Colors for CMYK process
- Image with 1/4" of excess by side
- Graphics must be saved in photoshop (with layers)
 - (or your sign company file type requirements)
- Include a full color print out

Material Requirements:

- 3M exterior grade UV resistant vinyl adhesive

Note: Texts and important parts of the image should be within the visible area. The visible area is illustrated by dotted lines when it applies.